



## HEALTH CARE AIDE

### PRIOR LEARNING ASSESSMENT AND RECOGNITION (PLAR) PROGRAM

#### SKILLS DEVELOPMENT AND ASSESSMENTS;

The **HCA Prior Learning Assessment and Recognition (PLAR)** process is for individuals currently employed as Health Care Aides, Personal Support Workers, Nursing Attendants, and out of province trained HCA's etc. who do not currently possess a Government of Alberta recognized certificate and feel that they have the skills and knowledge necessary to meet the standards for a Health Care Aide certificate.

#### HCA PLAR PROCESS

##### 1. SELF-ASSESSMENT AND ANALYSIS //

Applicants are required to complete a self-assessment. This self-assessment lists the course learning outcomes and requires applicants to determine their level of proficiency in each one.

##### 2. CREATION OF AN INDIVIDUALIZED STUDY PLAN //

From this self-assessment, Robertson's education department will identify knowledge and skill gaps and create an individualized study/training plan.

##### 3. CHALLENGE OF THE COURSE'S WRITTEN EXAM //

If the self assessment indicates thorough competency and knowledge of the subject, the student may challenge the course exam in a proctored environment. An 80% grade is required to pass. The HCA certificate consists of 9 courses. Applicants wishing to obtain their certificate must challenge/pass all 9 courses.

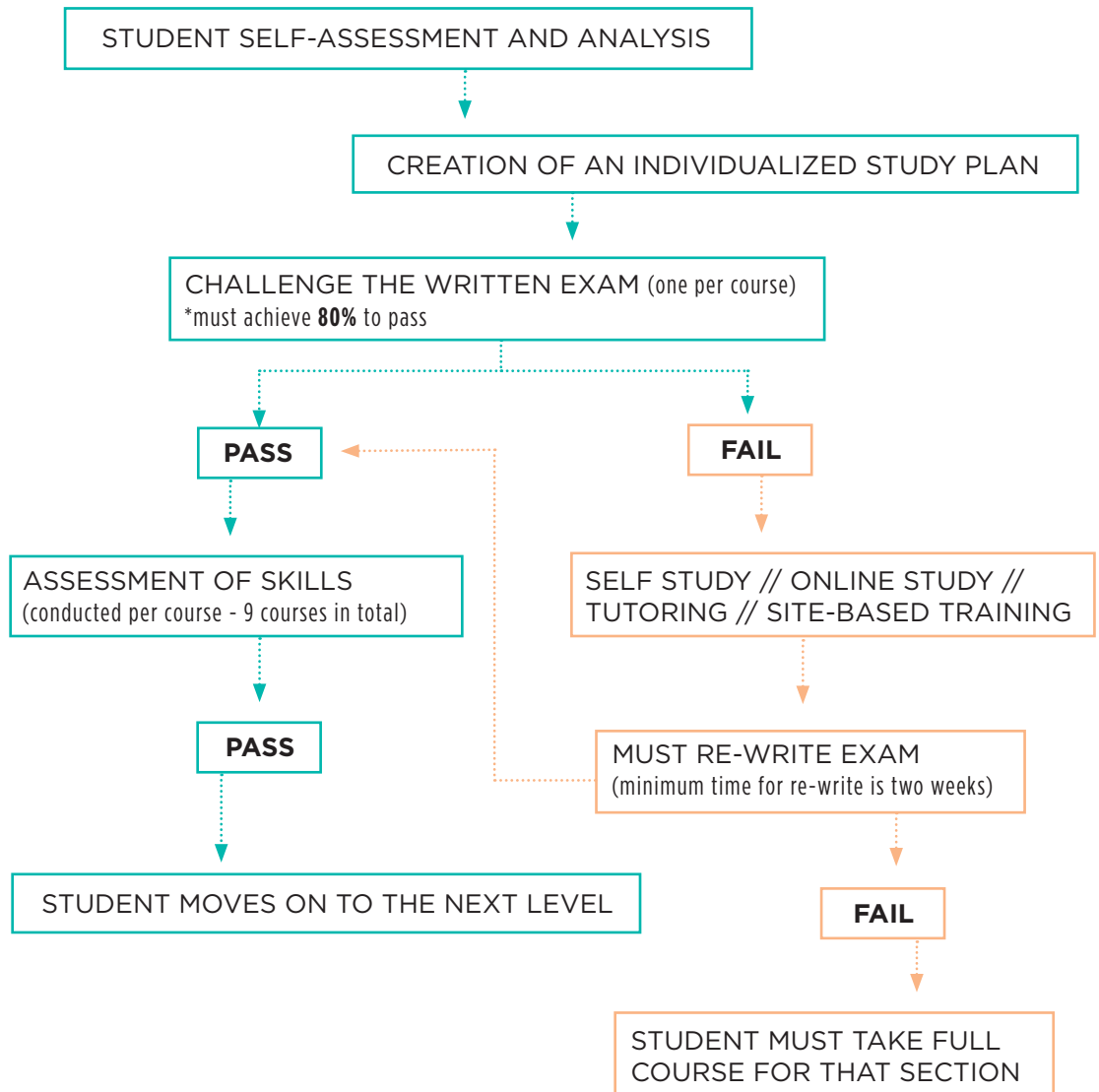
##### 4. SELF-STUDY/ONLINE STUDY (OR SITE-BASED WORKSHOPS) //

Should a student not be successful in completing their challenge exam for a course or if a student and/or Robertson College assessor has indicated they require training in a course, the student will be provided with a self study module and/or enrolled in an online course to take the appropriate training. LPN's or RN's identified by the employer may act as tutors for the student(s) under the mentorship of Robertson educators. Students may also choose to attend a site based learning session at a Robertson College facility.

##### 5. ASSESSMENT OF KNOWLEDGE AND SKILLS //

When the student achieves a passing grade on the individual course exam, the next step requires them to successfully complete an in lab skills assessment facilitated by a Robertson College educator or an authorized off-site RN or LPN.

## PLAR ASSESSMENT PROCESS



### ADMISSION REQUIREMENTS //

1. Provide confirmation of Grade 10 English or pass an English Equivalence test (ie Robertson College's pre-entrance exam)
2. Must provide letter of recommendation from employer and proof of a minimum 500 hours of portability
3. Student must submit a resume that includes dates of work experience as an HCA or equivalent educational training (eg. HCA certification from another province)
4. Completion of a self-assessment audit (obtained after application is made)

### CREDENTIAL //

After successfully completing all program requirements, graduates will be awarded a Robertson College – Government of Alberta Health Care Aide certificate.